

OWNER'S GUIDE



BOOSTER PUMP

INSTALLATION AND OPERATING INSTRUCTIONS

Your Hayward centrifugal Booster Pump has been quality-built and engineered to give you many years of efficient, dependable, corrosion-free service.

The advanced design reduces operation and maintenance to simple, common-sense procedures.

IMPORTANT

*This appliance is not intended for use by young children or infirm persons unless they have been adequately supervised by a responsible person to ensure they can use the appliance safely.

*Young children should be supervised to ensure that they do not play with the appliance.

GENERAL TIPS ON PUMP INSTALLATION

Locate the pump as close to pool as practical and run suction line as direct as possible. **Secure pump to base with screws or bolts to reduce vibration and pipe stress.**

Never overtighten pipe connections—use only pipe sealants formulated specifically for plastics, i.e., Teflon tape, Permatex No. 2, etc.

Suction line should have continuous slope from lowest point in line. Make sure suction joints are tight. Suction pipe should be as large or larger than discharge pipe.

Damp, non-ventilated locations should be avoided. Motors require free circulation of air to aid in cooling.

Insure that the electrical supply available agrees with motor's voltage and is 50 HZ, and that wire size is adequate for the KW rating and distance from power source. Motor must always be properly earthed. Electrical circuits must be supplied through a Residual Current Device - RCD (safety switch), with a rated residual operating current of 30mA. All electrical wiring must be performed by qualified electrical contractor, and must conform to electrical regulations and AS3000 wiring rules.

STARTING AND PRIMING INSTRUCTIONS

Fill strainer/housing with water to suction pipe level. Never operate the pump without water. Water acts as a coolant and lubricant for the mechanical shaft seal.

Open all suction and discharge lines and valves, as well as air bleed (if available) on filter. (The air that is to be displaced from the suction line must have some place to go.)

CAUTION: All suction and discharge valves must be open when starting the system. Failure to do so could cause severe personal injury and/or property damage.

Turn on power and allow a reasonable time for priming. Five minutes is not unreasonable. (Priming time depends on suction lift and horizontal length of suction piping.) If the pump will not start, or will not prime, see TROUBLE SHOOTING GUIDE on back page.

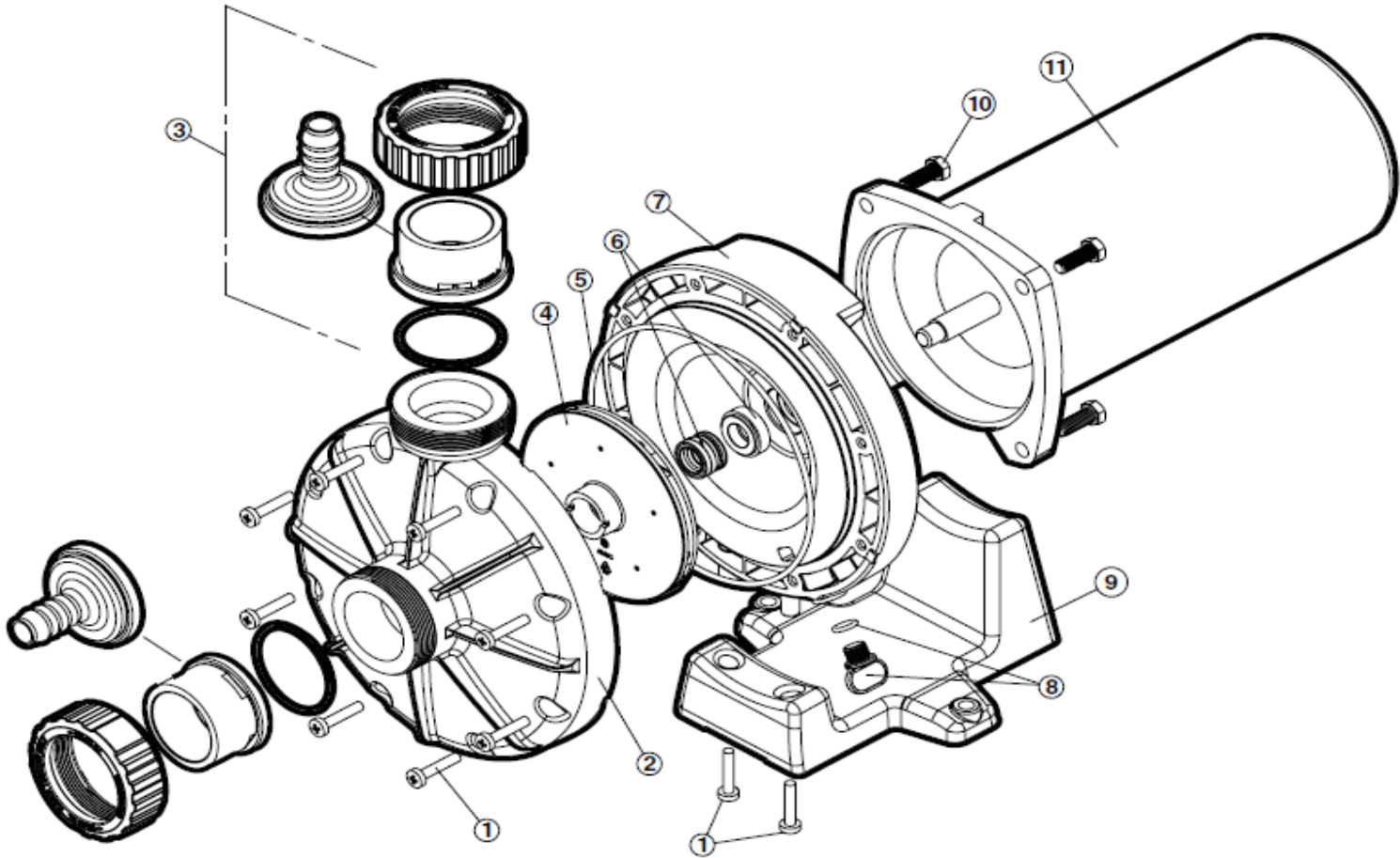
Special Notice for 415V. 3 Phase Models

Only a qualified electrician may connect or disconnect this pump to/from a power supply.

The motor must be connected by means of fixed wiring so that the IP rating is maintained when doing so. Electrician must check direction of rotation at time of installation.

The motor is not suitable for flex and plug connection as starter/contactors with overload is required and this must be set according to the rated current.

Model number: BP100



Ref #	Code	Description	Quantity Required
1.	20-AX6060Z1	Screws	10
2.	20-AX6060A	Volute	1
3.	20-AX6060UNPAK	Union Fitting Kit (2 Unions with O-Rings)	1
-	20-SPX1495Z1	Union O-Ring (Singular)	2
4.	20-AX6050C	Impeller Assembly	1
5.	20-AX6060S	O-ring	1
6.	20-SPX2700SA	Seal Assembly	1
7.	20-AX6060E	Seal Plate Assembly	1
8.	20-SPX4000FG	Drain Plug with O-Ring	1
9.	20-AX6060G	Motor Support	1
10.	20-SPX3200Z5	Motor Bolts	4
11.	20-SPX6050AQM	Motor - Booster Pump	1

MAXIMUM TOTAL HEAD - IMPORTANT INSTALLATION INFORMATION

Model	Max Total Metres Head	Max Pressure KPa
BP100	26.5	260

MAINTENANCE

1. Hayward pumps have self-lubricating motor bearings and shaft seals. No lubrication is necessary.
2. Keep motor clean. Insure air vents are free from obstruction.

**NB Do not use petroleum based lubricants on gaskets, O-rings or plastic components.
Use only silicone based lubricants.**

A. MOTOR WON'T START

1. Check open switches or relays, blown circuit breakers or fuses.
2. Ensure power cord is plugged in and power is switched on, (240v Models Only).
3. Refer to Authorised Service Agent or other qualified person.

B MOTOR CUTS OUT

NOTE: Your Hayward pump motor is equipped with Automatic Thermal Overload Protection. The motor will automatically shut-off, under normal conditions, before heat damage buildup, due to an improper operating condition, can occur. The motor will auto-restart when safe heat level is reached.

If motor fails to restart switch power off and contact an authorised Hayward Pump Service Technician or other qualified service company.

C. MOTOR HUMS, BUT DOES NOT START

If motor fails to start switch power off and contact an authorised Hayward Pump Service Technician or other qualified service company.

D. PUMP WON'T PRIME

1. Make sure pump/strainer is filled with water, and that cover gasket is clean and properly seated. Hand tighten the union nuts.

2. Make sure all suction and discharge valves are open and unobstructed, and that pool water level is above all suction openings.

E. LOW FLOW - Generally, check for:

1. Clogged or restricted strainer or suction line;
2. Plugged or restricted discharge line of filter (high discharge gauge reading).
3. Air leak in suction (bubbles issuing from return fittings).

F. NOISY PUMP—Check for:

1. Air leak in suction causing rumbling in pump.
2. Cavitation due to restricted or undersized suction line and restricted discharge lines.
3. Vibration due to improper mounting, etc.
4. Foreign matter in pump housing.
5. Motor bearings made unserviceable by wear, rust, or continual overheating. Refer to authorised service agent.

G. If the Supply Cord is damaged, it must be replaced by the manufacture, its service agent or similarly qualified persons in order to avoid a hazard.

SERVICE & REPAIRS

Consult your local authorised Hayward dealer or service center. No pumps or motors may be returned directly to the factory without the expressed written authorisation of Hayward Pool Products (Australia) Pty Ltd.

Warning

The Pump Motor is an electrical device and as such should not be disassembled or serviced by anyone other than an authorised Hayward Service Technician or qualified Electrical Service Company. An experienced Pool Service Technician should attend to any other problems that cannot be corrected by routine maintenance.



Rainbow Pool Products

PO Box 2388, Mansfield Qld 4122

Telephone STD 61-7-3849 5385

Facsimile STD 61-7-3849 5384

Email: info@rainbowpoolproducts.com.au

Web: www.rainbowpoolproducts.com.au