



Quality Pool & Spa Products

Stainless Steel Grating



Code

Description

Stainless Steel Grating

32415	Stainless Steel longitudinal grille 195 mm
32416	Stainless Steel longitudinal grille 245 mm
32417	Stainless Steel longitudinal grille 295 mm
32418	Stainless Steel longitudinal grille 345 mm
32729	Stainless Steel 90° corner 195 mm
32730	Stainless Steel 90° corner 245 mm
32731	Stainless Steel 90° corner 295 mm
32732	Stainless Steel 90° corner 345 mm

SPECIFICATIONS

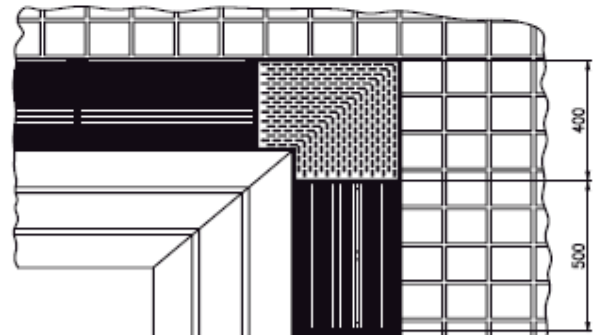
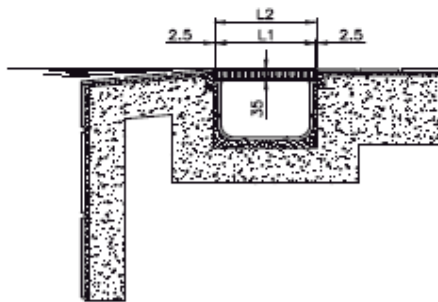
Stainless Steel Grating

Longitudinal overflow grating, made in Stainless Steel. It is necessary to construct the channel 5mm wider than the grille itself, to allow for easy assembly.

It is made up of straight sections of AISI-304 Stainless Steel, 500 mm in length. Straight sections can be made-to-measure in order to fit the length of the swimming pool.

The 90° corner is made of Stainless Steel and is the perfect complement to the Stainless Steel longitudinal grating. Metal with non-slip surface. 4 models with different sizes according to the width of grating used.

	Product Code	Standard Packaging	Standard Weight kg
Stainless Steel longitudinal grille 195 mm	32415	-	-
Stainless Steel longitudinal grille 245 mm	32416	-	-
Stainless Steel longitudinal grille 295 mm	32417	-	-
Stainless Steel longitudinal grille 345 mm	32418	-	-
Stainless Steel 90° corner 195 mm	32729	-	-
Stainless Steel 90° corner 245 mm	32730	-	-
Stainless Steel 90° corner 295 mm	32731	-	-
Stainless Steel 90° corner 345 mm	32732	-	-



Grating code	Corner code	L1	L2
32415	32729	195	200
32416	32730	245	250
32417	32731	295	300
32418	32732	345	350