



Salt Water Electrolysers/Chlorine Generators; SMC Series

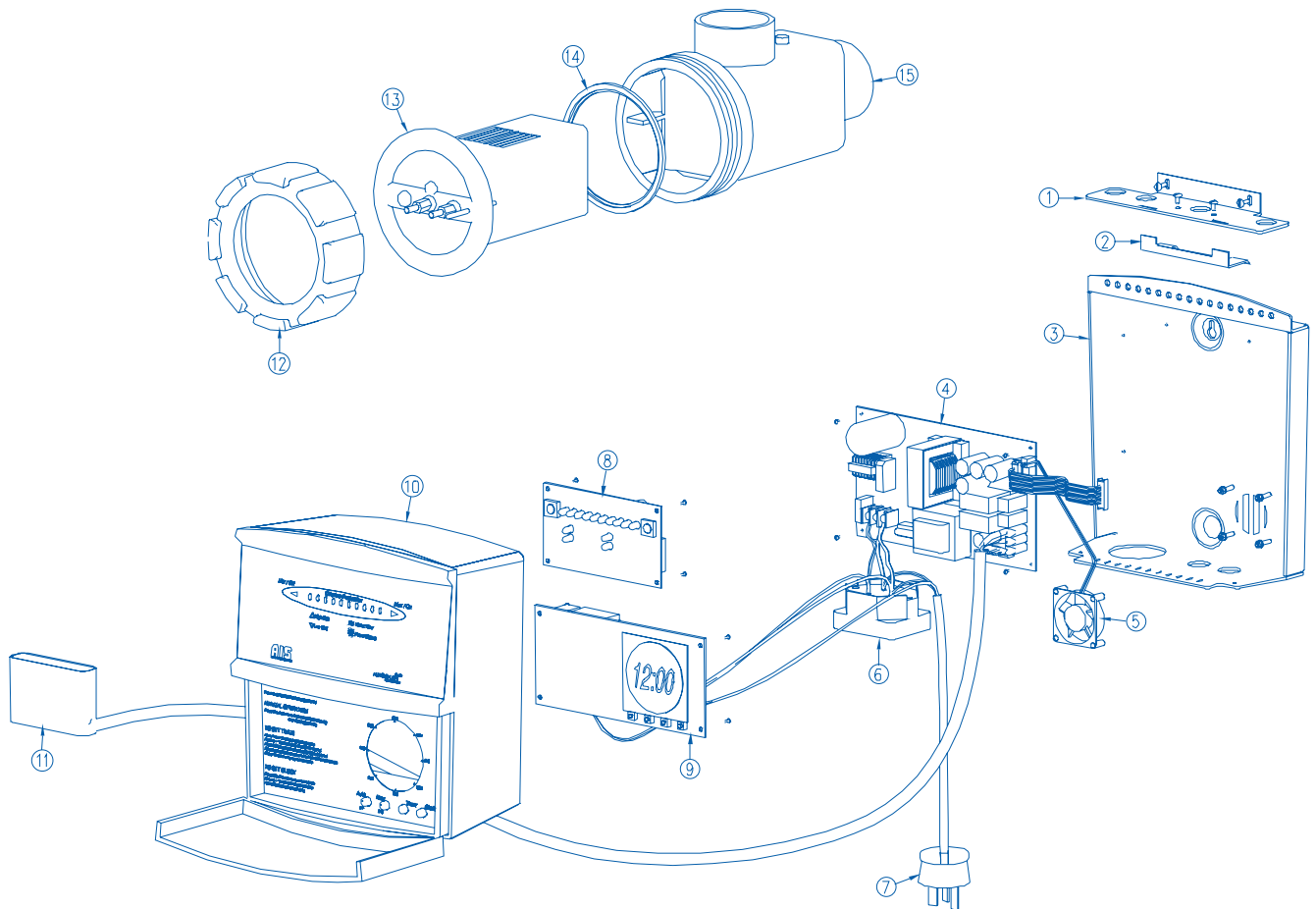
- Reverse Polarity (Reduced Maintenance)
- The Reversing Action De-scales The Build-up Of Calcium And Reduces Electrode Cleaning Maintenance By 95%
- Powered By Switch Mode Power Supply (SMPS)
- Considerably More Efficient Than Transformer Powered Electrolysers/Chlorine Generators
- Smaller And Lighter Means Easy Installation Into Tight Spaces
- Bipolar Electrode And Superior Coating Of Electrodes Extends Electrode Life
- Salinity Range: 4,000 - 35,000 mg/L

Model	Chlorine Gas Equivalent	Input AC Power Consumption*	Water Flow	Dimension (Packaged)	Weight Gross
	Grams/Hour	kW	Litres/minute	L x W x H (cm)	Kg
SMC20	20	0.250	200 – 400	48 x 35 x 17	4.5
SMC20T	20	0.250	200 – 400	48 x 35 x 17	4.5
SMC30	30	0.330	200 – 400	48 x 35 x 17	4.5
SMC30T	30	0.330	200 – 400	48 x 35 x 17	4.5

*at 5000mg/L TDS, 7.5 pH, 20°C and specified flow rates

NB: Back up power for the timer is standard for SMC series Electrolysers/Chlorine Generators sold in Australia only
Data provided in table above to be used as a guide only

Schematic Drawing Of SMC20/SMC30



15	CHTS	HOUSING THREADLOCK CELL CLEAR
14	ORLTC	O-RING THREADLOCK HOUSING
13	CELLSMC20/30	CELL SMC20 BI-POLAR CHLORINE GENERATOR
12	SDBLR	RING LOCKING THREADLOCK CELL BLUE
11	CLSMC	CELL LEAD SMC CHLORINE GENERATOR
10	TCSMCC	TOP COVER SMC CHLORINE GENERATOR (COMPLETE)
9	TCELCD	TIME CLOCK ELECTRONIC LCD DISPLAY
8	TPSMCB	BOARD SWITCH MODE CONTROLLER
7	L240B	LEAD Ø 3 PIN PLUG 240V 3 CORE FLEX BLUE
6	PO	SOCKET 240V PUMP OUTLET
5	TPKD2404PFB2-8	FAN 40 x 40mm 24V DC
4	TPSMPS8	BOARD SWITCH MODE POWER SUPPLY
3	TPBPSMC20/30	BASE PLATE SMC20 CHLORINE GENERATOR
2	TPHSCSMC	CLAMP HEATSINK SMC CHLORINE GENERATOR
1	TPHSPSMC	HEATSINK PLATE SMC CHLORINE GENERATOR
ITEM	PART No.	DESCRIPTION
MATERIAL LIST		