



Rainbow Pool Products

PO Box 2388, Mansfield Qld 4122

Telephone STD 61-7-3849 5385

Facsimile STD 61-7-3849 5384

Email: info@rainbowpoolproducts.com.au

Web: www.rainbowpoolproducts.com.au

Skimmer Boxes

Suitable for domestic, semi commercial and commercial swimming pools



SupaSkimmer Widemouth



SupaSkimmer

SupaSkimmer

The SupaSkimmer is a large capacity skimmer box which is ideal for use in large domestic, semi commercial and commercial swimming pools. Because of its large capacity 5.9 litre debris collection it is also ideal for any swimming pool that is constructed in leafy environments.

- Lock down leaf basket and vacuum plate - holds the leaf basket and vacuum plate firm.
- Large capacity basket – 5.9 litres, over double the size of conventional skimmers.
- 2 x 50mm bottom suction ports – less water flow restrictions.
- 2 x 40mm side ports – ideal for wall mount cleaners.
- New child resistant safety lid – prevents child accidents.
- Deeper body style – less chance of running pumping equipment dry.
- Built in overflow drain port to assist the prevention of flooding, during heavy rain.

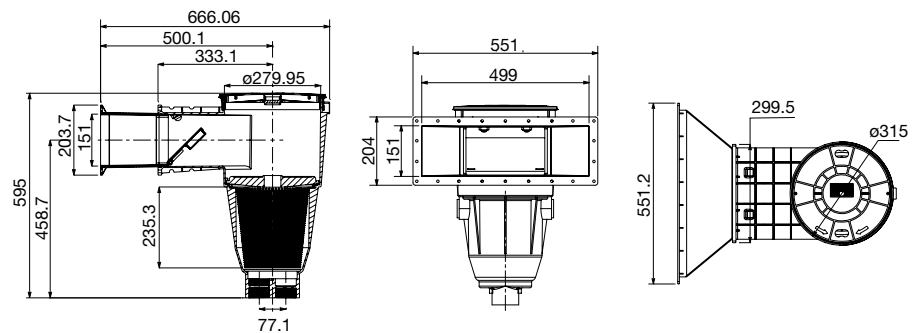
SKIMMER BOXES

Part Number	Product Description	Nominal Size
29209	Supasaver Skimmer Extended 100mm	Concrete
29201	Supaskimmer	Concrete
29206	Supaskimmer with Square rim	Concrete
29205	Supaskimmer	F/glass
29210	Supaskimmer Widemouth	Concrete
292011	Commercial Supaskimmer (Glass reinforced lid)	Concrete

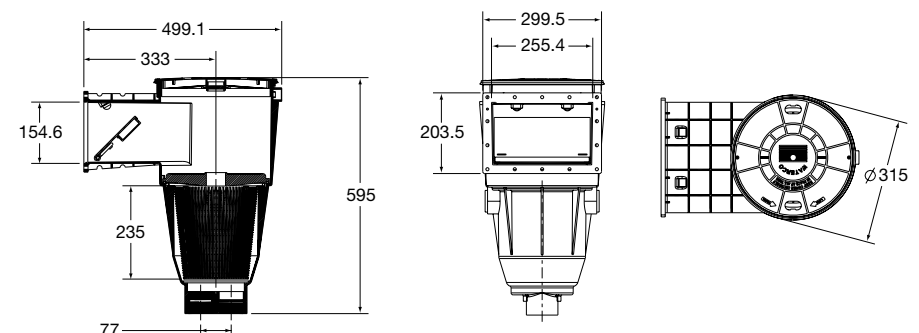
Specifications

Model	Max. Surface Area	Suction Pipe (mm)	Opening (mm)	Basket Capacity (litres)	Total Height (mm)	Total Depth (mm)	Unit Weight (kg)
Supaskimmer	75 m ²	2 x 50	247x152	5.9	580	500	7
Supaskimmer Widemouth	75 m ²	2 x 50	551x152	5.9	580	500	10

SupaSkimmer Widemouth



SupaSkimmer





Rainbow Pool Products

PO Box 2388, Mansfield Qld 4122

Telephone STD 61-7-3849 5385

Facsimile STD 61-7-3849 5384

Email: info@rainbowpoolproducts.com.au

Web: www.rainbowpoolproducts.com.au

Skimmer Boxes

Suitable for domestic, semi commercial and commercial swimming pools

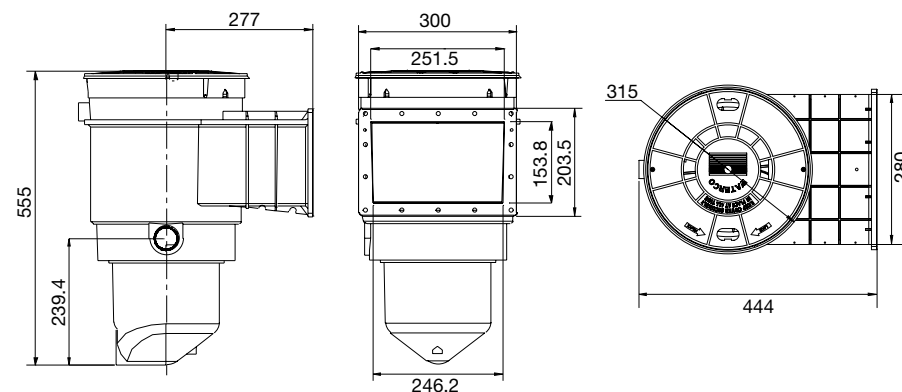
S75 SKIMMER

Part Number	Product Description	Nominal Size
29251	Skimmer Box S75C MK2	Concrete
29253	Skimmer Box S75 with Square rim	Concrete
29256	Skimmer Box S75F MK2	F/glass

Specifications

Model	Max. Surface Area	Suction Pipe (mm)	Opening (mm)	Basket Capacity (litres)	Total Height (mm)	Total Depth (mm)	Unit Weight (kg)
S75	75 m ²	50	247x152	2.4	520	440	6

Dimension



S75 Skimmer Box

The S75 skimmer is a general purpose skimmer which can be used in concrete, fibreglass and above ground pool installations.

It has a built in overflow drain port to assist the prevention of flooding, during heavy rain. A horizontal 50mm suction take-off reduces the suction lift demands on the pump, saving energy.

- Lock down leaf basket and vacuum plate - holds the leaf basket and vacuum plate firm
- Child safety lid lock down system – prevents child accidents
- Square and round deck lid configuration

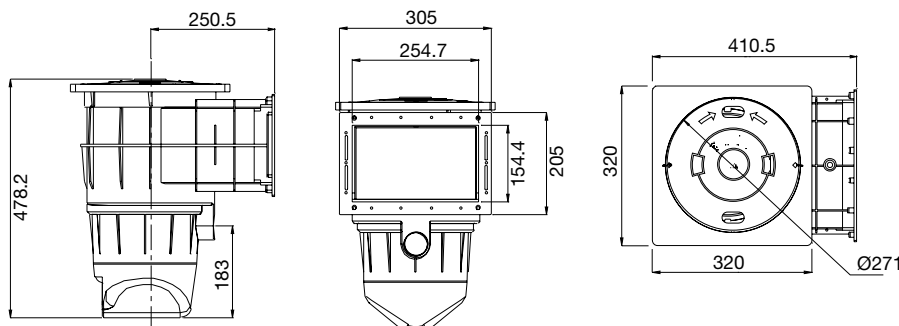
SP5000 SKIMMER

Part Number	Product Description	Nominal Size
ASM002	Paramount SP5000	Concrete
ASM004	Paramount SP5000 with extended throat	F/glass
ASM005	Paramount SP5000 w/o gasket	F/glass

Specifications

Model	Max. Surface Area	Suction Pipe (mm)	Opening (mm)	Basket Capacity (litres)	Total Height (mm)	Total Depth (mm)	Unit Weight (kg)
SP5000	75 m ²	50	255x155	2.6	478.2	385	5

Dimension



SP5000 Skimmer

The SP5000 skimmer is a general purpose skimmer which can be used in concrete, fibreglass and above ground pool installations. The SP5000 is sized to minimise excavation and reduce concrete and steel requirements, whilst maintaining an optimum skimming action. A horizontal 50mm suction take-off reduces the suction lift demands on the pump, saving energy.





Rainbow Pool Products
 PO Box 2388, Mansfield Qld 4122
 Telephone STD 61-7-3849 5385
 Facsimile STD 61-7-3849 5384
 Email: info@rainbowpoolproducts.com.au
 Web: www.rainbowpoolproducts.com.au

Skimmer Boxes

Suitable for domestic, semi commercial and commercial swimming pools

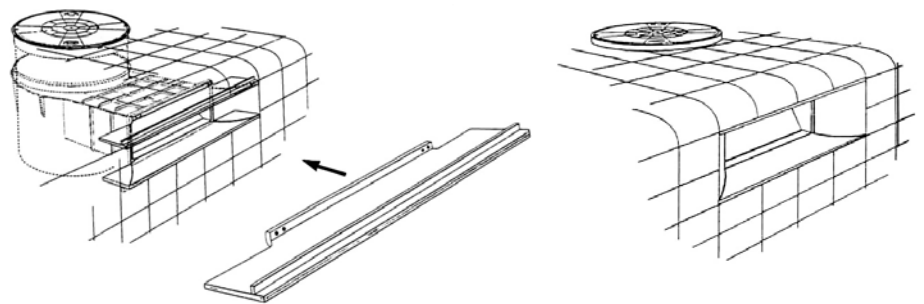


Waterco's skimmer lintels are manufactured in ABS plastics and are designed to become an integral part of Waterco's Skimmer Box in a concrete installation.

The lintel will structurally support the installation of all types of pool pavers across the skimmer box opening.

SKIMMER LINTEL

Part Number	Product Description	Nominal Size
62421	Skimmer Lintel	Concrete



SKIMMER BOX EXTENSION RING

Part Number	Product Description	Nominal Size
624105	Skimmer Extension Ring	



If the skimmer is to be installed so that the deck lid will not be secured to the skimmer body, Waterco recommends using a skimmer Extension Ring (624105) for trouble free installation. The Extension Ring sits snugly in between the skimmer body and the Deck Ring and is strong enough to hold its shape during concreting. Using the Extension Ring will prevent misalignment of the Deck Ring and the skimmer body.

- Eliminate problems caused by concrete intruding into the skimmer box cavity.
- Ensure there are no obstructions to removing and replacing vacuum plates.
- Extension rings can be piggybacked to provide extensions in multiples of 60mm

